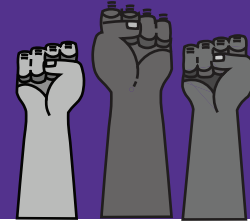


How to Calculate ***DUES ALIGNMENT***



The dues alignment will be a small change per month. Please keep in mind that our 1-year deal brings 3% in across-the-board base wage increases. The dues alignment won't go into effect until after our new raises kick in for 2024.

If you're a Custodian that earns \$48,817 (exclude overtime), this is your dues amount per month:

Current Dues Rate of 1.25%

Base Salary	Dues Per Month
\$48,817.00	\$50.85

With Dues Alignment to 1.5%

Base Salary	Dues Per Month
\$48,817.00	\$61.02

\$61.02 - \$50.85 = \$10.17 more per month

If you're a Sr. HD Equip. Mech. that earns \$98,470 (exclude overtime), this is your dues amount per month:

Current Dues Rate of 1.25%

Base Salary	Dues Per Month
\$98,470.00	\$102.57

With Dues Alignment to 1.5%

Base Salary	Dues Per Month
\$98,470.00	\$123.09

\$123.09 - \$102.57 = \$20.52 more per month

If you're an RCTO-II that earns \$81,912 (exclude overtime), this is your dues amount per month:

Current Dues Rate of 1.25%

Base Salary	Dues Per Month
\$81,912.00	\$85.33

With Dues Alignment to 1.5%

Base Salary	Dues Per Month
\$81,912.00	\$102.39

\$102.39 - \$85.33 = \$17.06 more per month



Learn more! 

